

DIAMOND CORE DRILLS

Tel: 01208 269 898 | Fax: 01208 264 818

PRODUCT DATA SHEET

DRY CORE DRILLS - SOLID BARREL

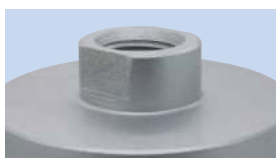
The Master Plus range of dry core drills offer fast drilling speeds and all round performance in masonry building materials due to the high quality diamond segments and welded barrels. Solid barrel dry core drills should only be used with an adequate dust extraction system; core drills used in this way can drill in excess of 300% faster than their slotted equivalents. Our dry core drills should be used in conjunction with a minimum 850W+ drill motor fitted with a slipping clutch.

KEY FEATURES

- High Quality Steel Barrels
- 1/2" BSP Female Backend
- High Diamond Concentration



High quality steel barrel



1/2" BSP female fitment



High diamond concentration

PRODUCT OVERVIEW:

Grade: Master Plus

Segment Height: 10mm

Segment Attachment: Brazed

Dry/Wet: Dry

Segment Type: Flat Curve

Barrel Type: Solid

DIAMETERS AVAILABLE:

Code	Diameter (mm)	Length (mm)
DDC200022	22	400
DDC200028	28	400
DDC200032	32	400
DDC200038	38	165
DDC200048	48	165
DDC200052	52	165
DDC200065	65	165
DDC200078	78	165
DDC200082	82	165
DDC200091	91	165
DDC200102	102	165
DDC200107	107	165
DDC200117	117	165
DDC200127	127	165
DDC200152	152	165
DDC200162	162	165

SUITABLE FOR USE ON:

CORE DRILL MACHINES IN ACCORDANCE WITH MANUFACTURERS HANDBOOK



APPLICATION:

MEDIUM SOFT FACING BRICK **

CONCRETE BLOCKS **

HARD SANDSTONE **

COARSE SANDSTONE **

SOFT SLATE **

BREEZE BLOCK **

LIGNACITE BLOCKS **



Brick



Soft Stone



Concrete Block

RECOMMENDED **
TO CUT THESE MATERIALS