

## DIAMOND CORE DRILLS

Tel: 01208 269 898 | Fax: 01208 264 818

### PRODUCT DATA SHEET

#### DRY CORE DRILLS - SLOTTED BARREL

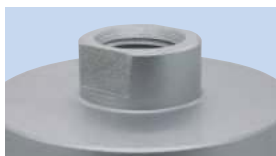
The Master Plus range of dry core drills offer fast drilling speeds and all round performance in masonry building materials due to the high quality diamond segments and welded barrels. Our dry core drills should be used in conjunction with a minimum 850W+ drill motor fitted with a slipping clutch.

#### KEY FEATURES

- Slotted Barrels For Fast Waste Removal
- 1/2" BSP Female Backend
- High Diamond Concentration



High quality slotted steel barrel



1/2" BSP female fitment



High diamond concentration

#### PRODUCT OVERVIEW:

**Grade:** Master Plus

**Segment Height:** 10mm

**Segment Attachment:** Brazed

**Dry/Wet:** Dry

**Segment Type:** Flat Curve

**Barrel Type:** Slotted

#### DIAMETERS AVAILABLE:

Code	Diameter (mm)	Length (mm)
DDC100022	22	400
DDC100028	28	400
DDC100032	32	400
DDC100038	38	165
DDC100048	48	165
DDC100052	52	165
DDC100065	65	165
DDC100078	78	165
DDC100082	82	165
DDC100091	91	165
DDC100102	102	165
DDC100107	107	165
DDC100117	117	165
DDC100127	127	165
DDC100142	142	165
DDC100152	152	165
DDC100162	162	165
DDC100182	182	165

#### SUITABLE FOR USE ON:

CORE DRILL MACHINES IN ACCORDANCE WITH MANUFACTURERS HANDBOOK



#### APPLICATION:

MEDIUM SOFT FACING BRICK \*\*

CONCRETE BLOCKS \*\*

HARD SANDSTONE \*\*

COARSE SANDSTONE \*\*

SOFT SLATE \*\*

BREEZE BLOCK \*\*

LIGNACITE BLOCKS \*\*



Brick



Soft Stone



Concrete Block

**RECOMMENDED \*\***  
TO CUT THESE MATERIALS